



BAMBOO

EN PRODUCT INFORMATION AND INSTRUCTIONS

Thank you for purchasing a Lamart brand product by Piere Lamart

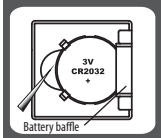
■ FEATURES

1. Indicate volume of water and milk
2. Two weight unit systems g, lb:oz convertible
3. Two volume unit systems ml, fl:oz convertible
4. Low battery power / Overload indication
5. With high precision strain gauge sensor
6. With zero, tare function
7. Auto off

■ TO INSTALL OR REPLACE BATTERY

The battery type of scale depends on the product structure. Find the battery type of your scale according to the following pictures, then install and replace battery as described.

1. 1×3V (CR2032 lithium battery (included). Remove isolation sheet before use.
2. 2×1,5V (AA/AAA) batteries (excluded). Remove package foil before use.



PIC 1

Open the battery case cover at the bottom of scale:

- A. Take out the used battery with the aid of a sharp object, as shown in picture.
- B. Install new battery by putting one side of the battery beneath the battery baffle and then pressing down the other side.

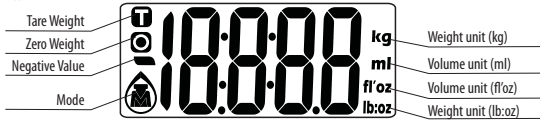


PIC 2

A. Take out used batteries, with the aid of a sharp object if needed.

B. Install new batteries by putting one side of the battery down first and pressing down the other side. (Please observe the polarity)

■ LCD



Weight mode



Milk volume mode



Water volume mode

■ BUTTON FUNCTION

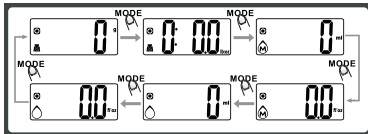
MODE: Mode and unit conversion

: Turn on/Turn off/Zero/Tare

ZERO

■ MODE AND UNIT CONVERSION

After turning on scale, press **MODE** button to select mode and unit, as shown below:

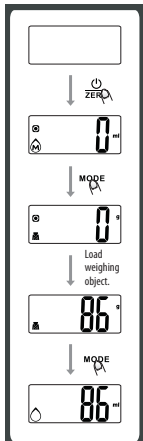


Remark: The unit system of scale depends on sales destination or the requirement of distributor.

■ TO START WEIGHING

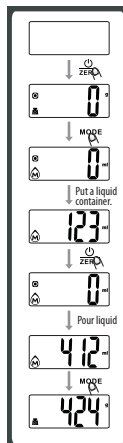
1. Weighing mode

- A. Place the scale on a solid and flat surface.
- B. Place bowl (if used) on the scale.
- C. Press to turn on the scale.
- D. Wait until LCD shows "0".
- E. Load weighing object on scale (or bowl) to start weighing. LCD will show the weight reading.
- F. If the weighing object is water or milk, press **MODE** button to choose volume mode and view the volume of weighing object.




2. Volume indication mode

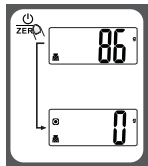
- A. Place the scale on a solid and flat surface.
- B. Press to turn on the scale.
- C. Wait until LCD shows "0", and press **MODE** button to choose "Water" or "Milk" mode.
- D. Put a liquid container onto the scale platform. LCD shows weight of container.
- E. Press to zero or tare weight.
- F. Pour liquid (water or milk) into the container, LCD shows the volume of the liquid.
- G. Press **MODE** button to choose "Weight" mode and view the weight of liquid.



■ “ZERO” OR “TARE” FUNCTION



To weigh different loads consecutively without removing loads from the scale.

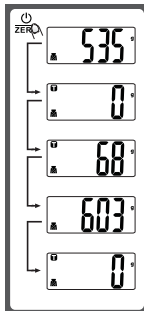
Put first load on the scale, get weight reading. Press  button to reset the LCD reading to “0” before adding next load. You can repeat this operation.



■ Condition 1: “ZERO” function


When total sum of all loads on scale $\leq 4\%$ of scale’s max. weight capacity.
 (4% = 80g when capacity is 2000g;
 200g when capacity is 5000g)

LCD will show ----- or 0g each time  is pressed.
 ----- means not stable, please wait for a moment.
 0g and meanwhile an icon  on the left side of LCD mean ZERO function is activated. Max. weight capacity remains unchanged.



■ Condition 2: “TARE” function

When total sum of all loads on scale $> 4\%$ of scale’s max. weight capacity.
 (4% = 80g when capacity is 2000g;
 200g when capacity is 5000g)

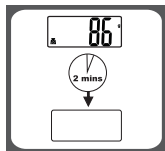
LCD will show ----- or 0g each time  is pressed. ----- means not stable, please wait for a moment. 0g and meanwhile an icon TARE on upper left corner of LCD mean TARE function is activated. Max. Weight capacity is reduced by total weight of all loads.

■ Under this condition:

By pressing , you can see the total weight of all loads on the scale.

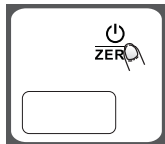
If you want to weigh more loads, just press  to reset LCD reading to “0” again.

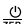
■ AUTO SHUT OFF

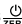



Auto shut-off occurs if display shows “0” or shows the same weight reading for 2 minutes.

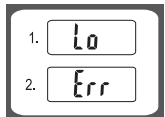
■ MANUAL SHUT OFF



To maximize battery life, always press  again to turn off the scale after using.

Note: when display shows “0”, press  to turn off the scale;
 when display shows weight reading, press  for 3 seconds to turn off the scale.

■ WARNING INDICATORS



1. Replace new battery.
2. Scale overload. Remove item to avoid damage. Max. weight capacity is indicated on the scale.

■ Battery Advice



- If the scale is not to be used for long periods, it’s recommended to remove the battery to avoid damage to the scale due to possible battery leakage.
- Keep the batteries out of reach of children.



- Do not mix old and new batteries, with different compositions or of different brands in order to prevent possible leakage, explosion.
- Do not heat or deform the batteries or expose to fire.



- Waste batteries should not be disposed of with household waste.
- Please check with your local authority for battery recycling advice.



Waste electrical products should not be disposed of with household waste. Please recycle where facilities exist. Check with your Local Authority or retailer for recycling advice.



! CLEANING AND CARE

1. Clean the scale with a slightly damp cloth. DO NOT immerse the scale in water or use chemical/abrasive cleaning agents.
2. All plastic parts should be cleaned immediately after contact with fats, spices, vinegar and strongly flavored/colored foods. Avoid contact with acids citrus juices.
3. Always use the scale on a hard, flat surface. DO NOT use on carpet.

SAFETY NOTICE

Do not use coarse or aggressive cleaning agents – this can damage the surface (e.g. caustic pipe cleaning agents).

Negligent handling may lead to surface damage (chipping). These defects are the result of improper use and do not constitute a product defect. We recommend that it is always cleaned by hand using non-aggressive cleaning agents and fine towels or sponges. Must not be used in a dishwasher.

ECOLOGY

Depending on the size of the product, all products have marks printed on them denoting the material used for the production of the packaging, components and accessories, as well as their recycling. Correct disposal of this product helps save valuable natural resources and prevents potential negative effects on the environment and human health, which could result from improper waste disposal.

Ask your local authorities or collection facility for more details. In accordance with national regulations penalties may be imposed for the incorrect disposal of this type of waste. **Keep plastic bags out of the reach of children, danger of suffocation.**

The buyer was informed about the function and handling of the product.

WARRANTY CARD

This product is covered by a 36-month warranty period from the date of purchase of the product. The warranty period commences on the date of purchase. The warranty card must be presented together with a valid proof of purchase of the given product. The provision of the warranty does not affect the rights of the buyer, which relate to the purchase of a product according to special legal regulations. Other relationships between the vendor and the buyer are governed by the valid provisions of the Civil Code.

PRODUCT (NAME/PRODUCT NUMBER/EAN):

SALE DATE:

VENDOR (business name and address):

STAMP AND SIGNATURE OF THE VENDOR/STORE:

This warranty card must be presented with every lodged complaint.

Always carefully store this warranty card.

The warranty card is only valid if it is legible and properly filled out with the stamp and signature of the vendor/store, sale date, address of the vendor/store and product description.

The warranty does not cover the following:

- the product was not used properly or was used in a way that contradicts this user's manual
- the product was modified or repaired at an unauthorised service centre or by an unauthorised person and original parts were not used for the repair.



Výrobce/Manufacturer:
FAST ČR, a.s.; Černokostecká 2111, 100 00 Praha 10, Czech Republic

www.lamart.cz