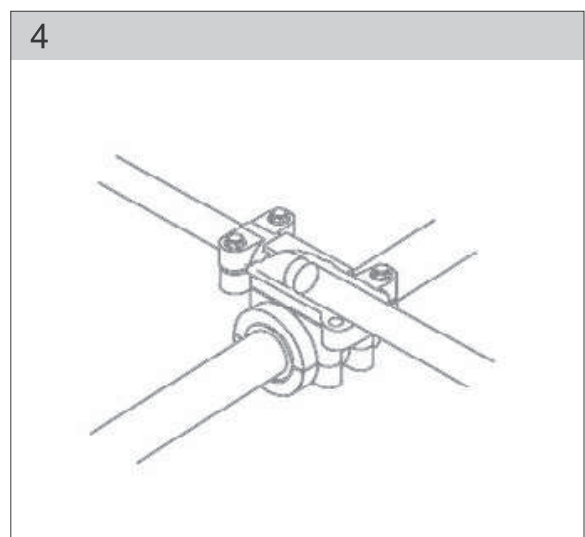
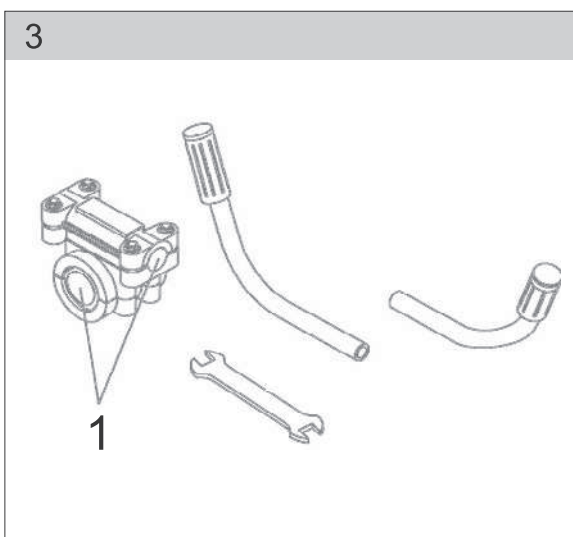
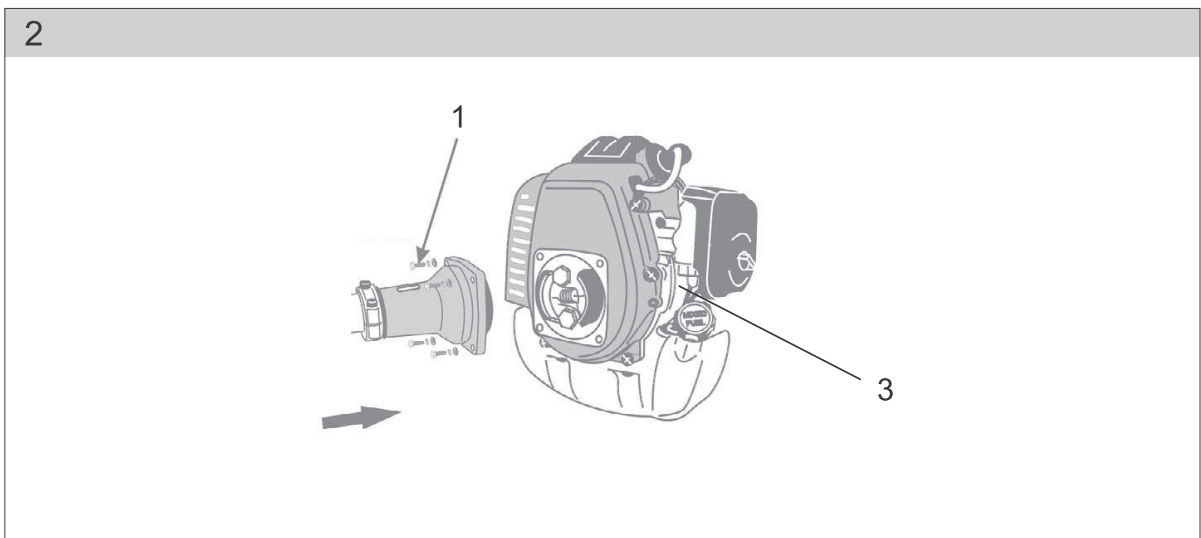
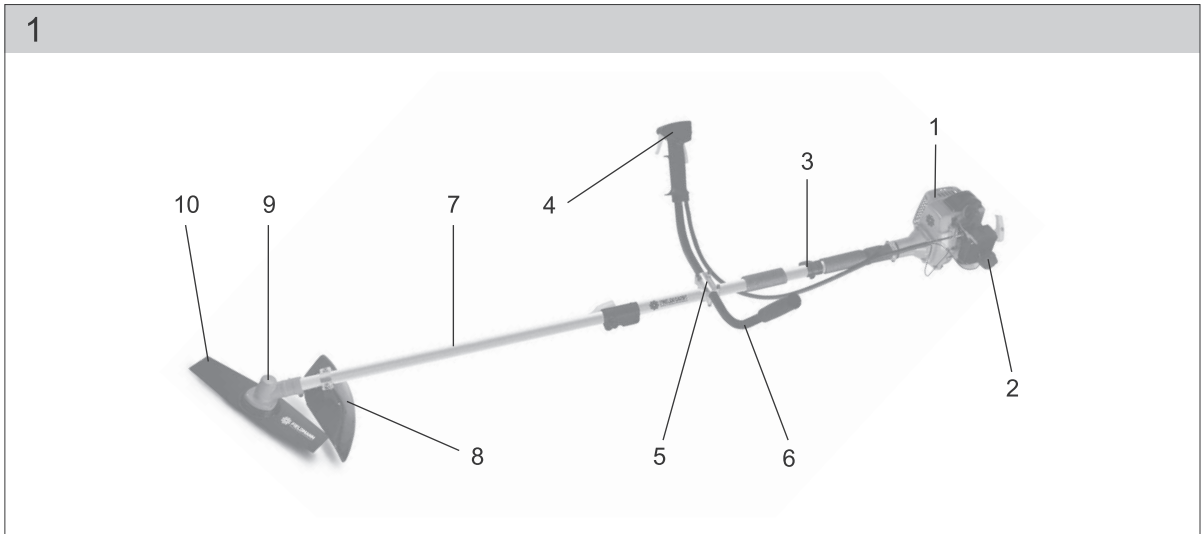




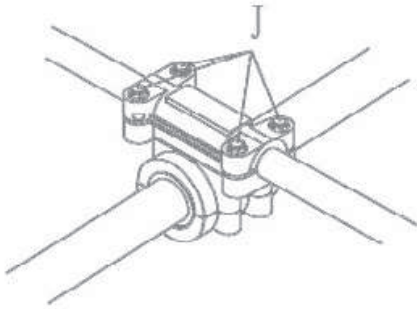
FIELDMANN[®]
Home & Garden Performance



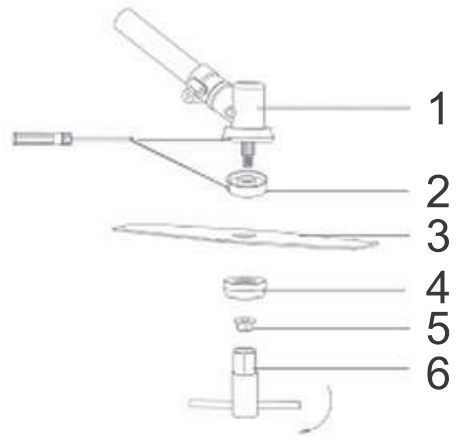
FZS 4003-B



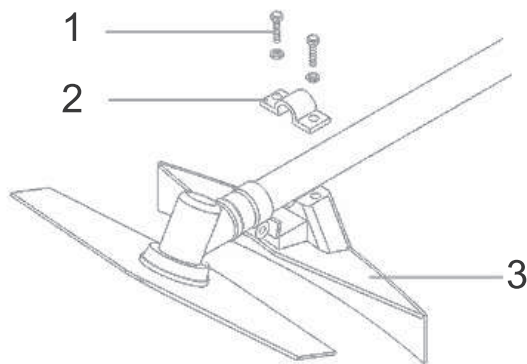
5



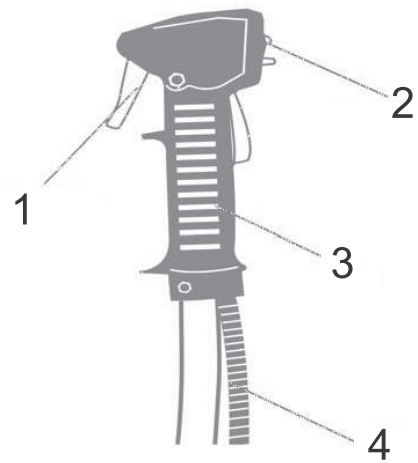
6



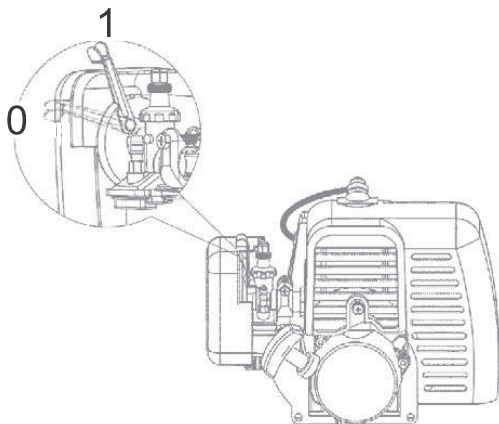
7



8

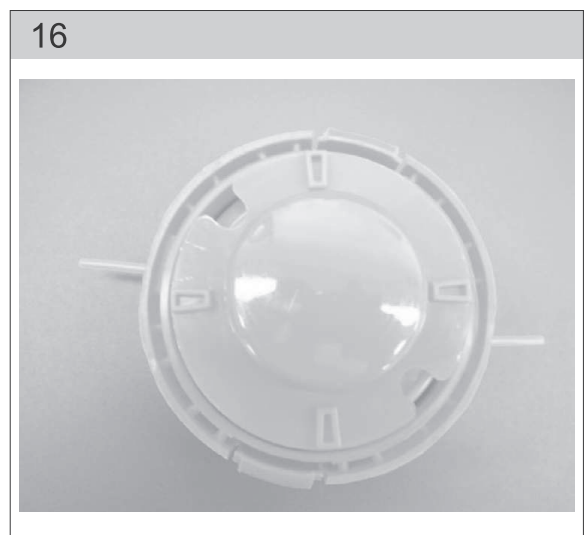
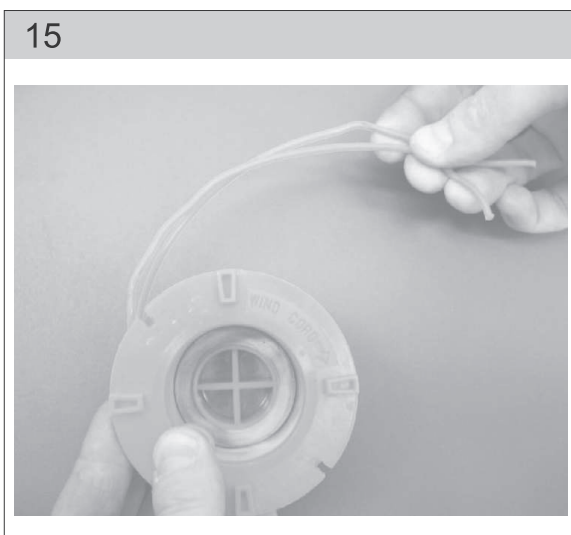
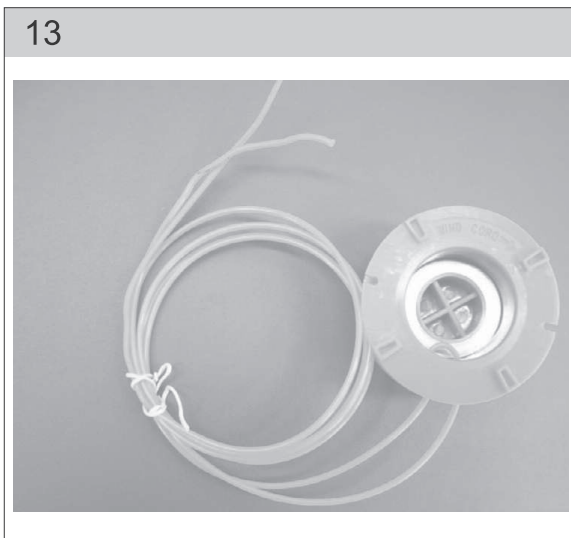
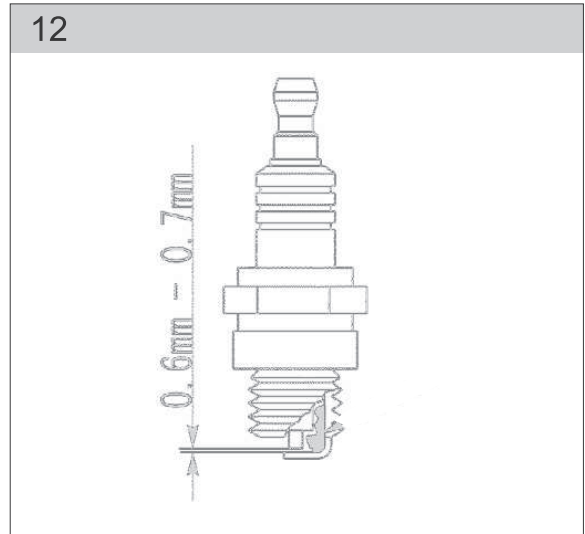
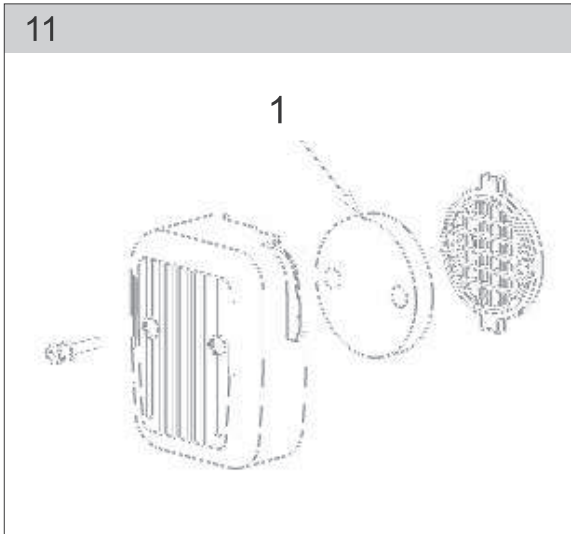


9



10





Gasoline brush cutter

OPERATION MANUAL

Thank you for your purchase of our gasoline brush cutter. Before beginning to use it, please, read this operation manual carefully and keep it for the case of a further use.

TABLE OF CONTENTS

| | |
|--|----|
| APPENDIX OF FIGURES | 3 |
| 1. GENERAL SAFETY INSTRUCTIONS | 8 |
| Important safety warnings | |
| Packaging | |
| Instructions for use | |
| 2. EXPLANATION FOR INSTRUCTION PLATES ON THE MACHINE | 9 |
| 3. MACHINE DESCRIPTION AND DELIVERY CONTENT | 10 |
| 4. MACHINE ASSEMBLY | 11 |
| 5. PUTTING INTO OPERATION | 12 |
| Before starting | |
| Fuel filling | |
| Gas lever and main switch (STOP) | |
| Starting | |
| Idle speed setup | |
| 6. INSTRUCTIONS FOR USE | 13 |
| Safety instructions | |
| Safety instructions - fuel | |
| Safety instructions – cutting tools | |
| 7. MAINTENANCE AND STORAGE | 14 |
| Machine maintenance | |
| Service | |
| Storage | |
| 8. TECHNICAL DATA | 16 |
| 9. WHAT TO DO “IF...” | 16 |
| 10. DECLARATION OF CONFORMITY | 18 |
| 11. DISPOSAL | 19 |
| WARRANTY CERTIFICATE | 64 |
| CONDITION OF GUARANTEE | 65 |

1. GENERAL SAFETY INSTRUCTIONS

Important safety warnings


- ✿ Unpack the product carefully and be sure not to throw away any part of the package before having found all components of the product.
- ✿ Keep the product in a dry place out of reach of children.
- ✿ Read all cautions and instructions. The failure to adhere to warning cautions and instructions may result in an accident, fire and/or a serious injury.

Packaging

The product is placed in a package preventing damage during transport. This package is a raw material therefore it can be handed-over for recycling.

Instructions for use

Before beginning to work with the machine, read the following safety rules and instructions for use. Familiarize with operating elements and the proper use of the device. Keep the manual in a safe place for future reference. We recommend keeping the original package including the inner packaging materials, cash voucher and guarantee card for a period of warranty at minimum. For a case of transportation, pack the machine into the original box from the manufacturer, thus ensuring a maximum protection of the product during a possible transport (e.g. moving or sending into a service station).

-  **Note:** If you hand the machine over to next persons, hand it over together with the manual. Adherence to the attached instructions for use is a precondition for the proper use of the machine. The operation manual includes also instructions for operation, maintenance and repairs.

The manufacturer does not take any responsibility for accidents or damages resulting from the failure to adhere to this manual.

2. EXPLANATION FOR INSTRUCTION PLATES ON THE MACHINE



Read the manual carefully before the use



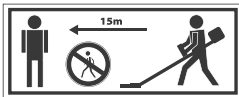
Use protective equipment when working



General warning of danger!



Watch out, recoil!



Keep other persons (especially children) and animals min. 15 m out of the working area.

3. MACHINE DESCRIPTION AND DELIVERY CONTENT

Machine description (see Fig.1)

- | | |
|---------------------------------|-------------------|
| 1 - Motor | 8 - Housing |
| 2 - Air cleaner | 9 - Gearbox body |
| 3 - Suspension | 10 - Cutting tool |
| 4 - Main switch + gas activator | |
| 5 - Handle bar grip holder | |
| 6 - Handle bar | |
| 7 - Shaft | |

Use of the product

The brush cutter is only intended for cutting of grass, weed, bush or underbrush. It must not be used for other purposes, e.g. trimming of lawns or hedges because an injury may occur in this case.

Machine characteristic

- ✿ Electronic ignition system
- ✿ Automatic centrifugal clutch
- ✿ Spiral transmission
- ✿ Cardan shaft

⚠ WARNING! Sharp blades.

Delivery content

Take the machine carefully out of the package and check whether there are all following components:

- ✿ Garden brush cutter
- ✿ Cord head with a cord of 2.5m length and 2.4mm diameter
- ✿ Disc head
- ✿ 3-teeth blade
- ✿ Tubular spanner
- ✿ Operation manual

In the case of some parts missing or damaged, please, contact the dealer where you've bought the machine.

4. MACHINE ASSEMBLY

Drive shaft parts

Drive shaft assembly (see Fig.2)


- ✿ Unscrew hexagonal screws (M6 x 10; Figs. 2, 1).
Fasten the drive shaft to the engine housing with the help of 4 screws, tighten thoroughly.

Handle assembly (see Figs. 3, 4, 5)

- ✿ Unscrew screws (2), put the handle bars to the grip holder (1), select the position according to your working style (right-handed – the switch on the right side when viewing from the engine). Pre-screw the upper parts of the grip holder (4 screws) (2), adjust the position of the handle bars and tighten the screws (2) thoroughly.

Gearbox parts (see Figs. 6, 7)

- ✿ Unscrew the locking bolt, mount the cutting tool respectively (see Fig. 6): Gearbox (1) – Cutting head carrier (2) – Cutting blade (3) – Cover (4) – Fixing nut (5). Insert a screwdriver to align the gearbox body groove with a hole of the cutting head carrier. Tighten the nut with the aid of the tubular spanner (6) delivered within the packaging.

 **Note:** Instead of the cutting blade, you can wind the head with the cord on the screw of the carrier.

- ✿ Mount the safety cover (3) on the shaft rod with the help of a clamp (2) and screws (1). Be particular about the proper position (see Fig. 7)

Cord replacement (see Figs. 13, 14, 15, 16)

- ✿ Demount the cord head, take-out the coil with the cord and remove the rest of the cord.
- ✿ Pull a new cord of the total length c. 2 m through both openings in the inner part of the cord head (see Fig. 14) so that both ends are of the same length (see Fig. 13).
- ✿ Wind both ends onto the coil in the direction of the WIND CORD marked arrow (see Fig. 15).
- ✿ Place the coil with the cord into the head (see Fig. 16), pull both ends of the cord through the opposite openings in the head and finish the assembly (close up).

5. PUTTING INTO OPERATION

Before starting

- ✿ Adjust the shoulder strap length and handle position so that you feel comfortably when working. Recheck tightening of all screws, bolts and nuts.

Fuel filling

- ✿ Gasoline – use only unleaded motor gasoline with octane number 95 (NATURAL 95).
- ✿ Oil – use only high-quality two-cycle engine oil intended for high speed engines. Mix with gasoline in 1:25 ratio and pour into the tank.

Gas lever and main switch (STOP) (see Fig. 8)

- ✿ The gas lever (1) with the electrical switch (2) are only partly mounted. Insert the gas cable (47) into the carburetor drawbar groove and connect the electrical switch wires. The gas lever is preassembled on the handle from the factory (3).
- ⚠ **WARNING!** When adjusting the gas lever, be sure not to let the cutting tool rotate while starting. The cutting tool would start turning at high speed abruptly and could be dangerous. The gas cable must be adjusted so that the engine is running at idle thrust when releasing the gas lever (the cutting tool is not rotating).

Starting (see Fig. 9)

- ✿ Press the gas lever to the ¼ of the gas lock and cage it.
- ✿ Turn the main switch on.
- ✿ Set the primer lever to the OFF (0) position.
- ✿ Pull the starter quickly. If the engine started-up, move the primer lever into the ON (1) position again. Repeat this procedure, until the engine starts-up and begins to run.
- ✿ After having started-up, let the engine warm at idle speed 2,500-2,800 rpm for c. 2-3 min before the load of the machine.
- ⚠ **WARNING!** The cutting blade may begin rotating just when starting. When starting the engine, the blade must not be touching anything.

Idle speed setup (see Fig. 2)

- ✿ If idle speed is too high or low, adjust the idle speed with the aid of the adjusting screw (3).
- ✿ If the speed is too high, turn the adjusting screw counterclockwise.
- ✿ If the speed is too low, turn the adjusting screw clockwise.

6. INSTRUCTIONS FOR USE

Safety instructions

Read carefully!

- ✿ Always wear safety helmet, safety gloves, protective clothing (trouser-legs against cutting through), protective gloves and safety shoes (see Fig. 10).
- ✿ Keep the machine out of the reach of children.
- ✿ Never work with the engine if there is only gasoline in the fuel tank.
- ✿ Never fill up fuel while the engine is running or still hot. Fill the service liquids into the engine only while the engine is cold.
- ✿ Store fuels in a closed container in a dry and cool place.
- ✿ Follow safety rules.
- ✿ Recheck the workspace before each use. Remove objects which may be flung away or get stuck into the machine.
- ✿ When working, all other persons have to be out of a range of 15 meters at minimum.
- ✿ Never use the machine without the protective safety cover (of the cutting blade) on.
- ✿ Never fill the fuel tank so that it is full up to the top completely.
- ✿ The fuel tank closing cover must be tightened thoroughly in order to avoid the fuel overflow.
- ✿ Do not let the machine run at full throttle if the fuel tank is empty.
- ✿ Never switch-off the machine abruptly if it runs at full throttle.
- ✿ Do not use the machine if it is damaged in any way. Contact an authorized service station.
- ✿ When carrying over, grasp the whole device; grasping the fuel tank only is dangerous, the fuel tank damage and fire may be a result.
- ✿ Always hold the brush cutter in both hands.
- ✿ Never put the warm brush cutter on dry grass.
- ✿ Do not smoke while working with the machine.

Safety instructions

Fuel

- ✿ The fuel tank has to be empty during transportation of the brush cutter.
- ✿ Transport fuels in approved jerry cans.
- ✿ Check the fuel tank lid regularly. It must be tightened thoroughly and fuel leak must not occur.
- ✿ Protect the living environment: take care to avoid fuel leakage and soil contamination.
- ✿ Start-up the machine minimally 3 meters away from the place where you filled fuel.
- ✿ Never fill up fuel in enclosed areas. Adequate ventilation must be ensured in the room; explosion hazard.
- ✿ Do not inhale fuel vapours. Fill up fuel while wearing protective gloves.
- ✿ Change and clean the protective clothing regularly.

Safety instructions

Cutting tools

- ✿ When mounting the cutting tool, check the blade condition. If it is damaged (cracked, bent, abrupt etc.), replace it.
- ✿ After having installed the blade, check whether the hole in the blade is aligned with the arm of the blade carrier.
- ✿ Rotate the blade, check whether the blade does not tend to rotate irregularly.
- ✿ Be sure to install the blade with its cutting edge in the direction of rotation. Never mount it the other way around.
- ✿ Check whether the cutting tool has been assembled properly, rotate it without a load (1 minute is enough).
- ✿ The blade has to be chosen appropriately for the given material.
- ✿ Never push the blade against objects while working. Objects must be cut at mild speed.
- ✿ If you hear an unusual sound or the machine vibrates unusually while working, stop working and find-out the cause.
- ✿ Do not stop the machine while the blade is going through the cut object. There is an injury and machine damage danger.
- ✿ The cutting tool must be fitted with an appropriate protective cover.

⚠ WARNING! The failure to follow instructions may result in serious or fatal injury of persons!!

- ✿ Give all persons working with this machine information on the machine operation and safety instructions.

7. MAINTENANCE AND STORAGE

Machine maintenance

- ✿ Before each use:
 - Recheck tightening of all screws, bolts and nuts.
 - Check whether fuel is not escaping from the fuel tank.
- ✿ After every 20 hours of operation:
 - Clean the air cleaner (1) (see Fig. 11).
 - Clean the fuel filter.
- ✿ After every 50 hours of operation:
 - Clean the spark plug and adjust a gap between electrodes to 0.6 - 0.7 mm distance (see Fig.12).
 - Clean deposits from the exhaust pipe and the muffler.
 - Dismount the shaft and lubricate with quality lubricant.

- ✿ Lubricate the gearbox.
- ✿ Recheck the assembly after maintenance and recheck tightening of all screws, bolts and nuts.
- ✿ Check carefully whether fuel liquid is not leaking.

Service

- ✿ In the case you find-out any defect after having purchased the product, contact the service department. When using the product, follow instructions given in the operation manual.
- ✿ Your claim will not be taken into consideration if you have modified the product or have not adhered to instructions given in this operation manual.

Warranty does not cover

- ✿ Natural wear of functional parts of the machine in consequence of its use
- ✿ Service interventions relating to the standard maintenance of the machine (e.g. cleaning, lubricating, adjusting, etc.)
- ✿ Faults caused by outer influences (e.g. climatic conditions, dustiness, unsuitable use, etc.)
- ✿ Mechanical damage resulting from a fall of the machine, shock, impact, etc.
- ✿ Damages resulting from unskilled handling, overloading, the use of improper parts, unsuitable tools etc. The risk of possible damage of claimed products which have not been secured against mechanical damage during the transport properly is born exclusively by the owner.

Storage

⚠ WARNING! If not using the machine for a longer time, store it according to the following instructions. Thus you will prolong the service life of your machine.

- ✿ Drain fuel from the fuel tank and carburetor completely. Close the primer and pull the starter 3 – 5 times.
- ✿ Unscrew the spark plug and put a small amount of engine oil into the hole. Pull the starter 2 – 3 times gently.
- ✿ Clean outer surfaces by a clean cloth. Store the machine in a clean and dry place.

8. TECHNICAL DATA

| | |
|---|------------------------|
| Model: | FZS 4003-B |
| Cylinder capacity: | 42.7 cm ³ |
| Maximum engine power: | 1.25 kW |
| Shaft length: | 1,500 mm |
| Engine type: | two stroke, air-cooled |
| Idling speed: | 3,000 rev/min |
| Recommended maximum idling speed: | 9,000 rev/min |
| Spark plug: | L6 (LD) |
| Fuel tank capacity: | 1,200 ml |
| Weight without fuel and sawing tools: | 7.5 kg |
| Sound power level, guaranteed LWA | 110 dB(A) |

Instructions Manual - language version only.

9. WHAT TO DO "IF..."

| Engine does not start | Possible cause | Remedy |
|---|---|--|
| 1. Check fuel | No fuel in the carburettor or tank. | Fill up fuel |
| | Fuel contains water. | |
| | Improper fuel mixture ratio. | Drain the fuel tank and the carburettor. Fill new fuel into the tank.. |
| 2. Take the spark plug out . | Defective or dirty spark plug. | Replace the spark plug. |
| | Wrong gap between electrodes. | |
| | Spark plug is damp, affected by gasoline (flooded engine).. | Dry the spark plug and reinstall. |
| 3. Bring the engine to the authorized service or to the dealer. | Clogged fuel filter, carburettor fault, ignition fault, clogged valves etc. | Replace or repair defected parts. |

| Insufficiently functional engine | Possible cause | Remedy |
|---|---|---|
| 1. Check the air filter. | Dirty air filter | Clean or replace the air filter element. |
| 2. Check fuel. | Fuel contains water. | Drain the fuel tank and the carburettor. Fill new fuel into the tank. |
| | Improper fuel mixture ratio. | |
| 3. Check the primer setup and gas control. | The primer not fully open. | Adjust the setup. |
| | Wrongly adjusted gas cable. | |
| 4. Bring the engine to the authorized service or to the dealer. | Clogged fuel filter, carburettor fault, ignition fault, clogged valves etc. | Replace or repair defective parts. |

| Engine starts-up, conks out immediately | Possible cause | Remedy |
|---|---|---|
| 1. Check fuel. | Fuel has run out. | Fill up fuel |
| | Fuel contains water. | Drain the fuel tank and the carburettor. Fill new fuel into the tank. |
| | Improper fuel mixture ratio. | |
| 2. Take the spark plug out and check. | Defective or dirty spark plug. | Replace the spark plug. |
| | Wrong gap between electrodes. | |
| 3. Check the air filter. | Dirty air filter. Clogged air filter | Clean or replace the air filter element. |
| 4. Bring the engine to the authorized service or to the dealer. | Clogged bleeder valve. | Replace or repair defective parts. |
| | Clogged fuel filter, carburettor fault, ignition fault, clogged valves etc. | |

10. DECLARATION OF CONFORMITY

EC Declaration of Conformity

Fast ČR, a.s., Černokostelecká 251 01 Říčany u Prahy, phone: 323204111, declares with binding effect, that brush cutter Fieldmann FZS 4003-B (the year of manufacture is indicated on a type label and is followed by a serial number of the machine), complies with the requirements of DIRECTIVE OF THE COUNCIL:

No. 2006/42/EC, 2006/95/EC, (approval certificate no.: 17704045 001)
No. 2004/26/EC, exhaust emission,

and has been tested in compliance with the following standards:
EN ISO 11806:2008

The company FAST ČR, a.s. is entitled to act on behalf of the manufacturer.

CE label: 13

Říčany, 29 November 2013

name stamp signature

FAST FAST ČR, a.s.
Černokostelecká 1621
251 01 Říčany u Prahy
ICO: 26726548 tel.: +420/ 323 204 111
DIČ: CZ26726548 fax: +420/ 323 204 110



Petr Uher quality manager

11. DISPOSAL

INSTRUCTIONS AND INFORMATION ON USED PACKAGE DISPOSAL

Put the used packaging material to the place designated for waste disposal by a municipality.



This symbol is valid in the European Union. If you wish to dispose of this product, ask local authorities or your dealer for necessary information about the right disposal method.



This product meets all fundamental requirements of applicable EU directives.

Changes of the text, design and technical specifications can be done without prior notice and we reserve the right for the changes.